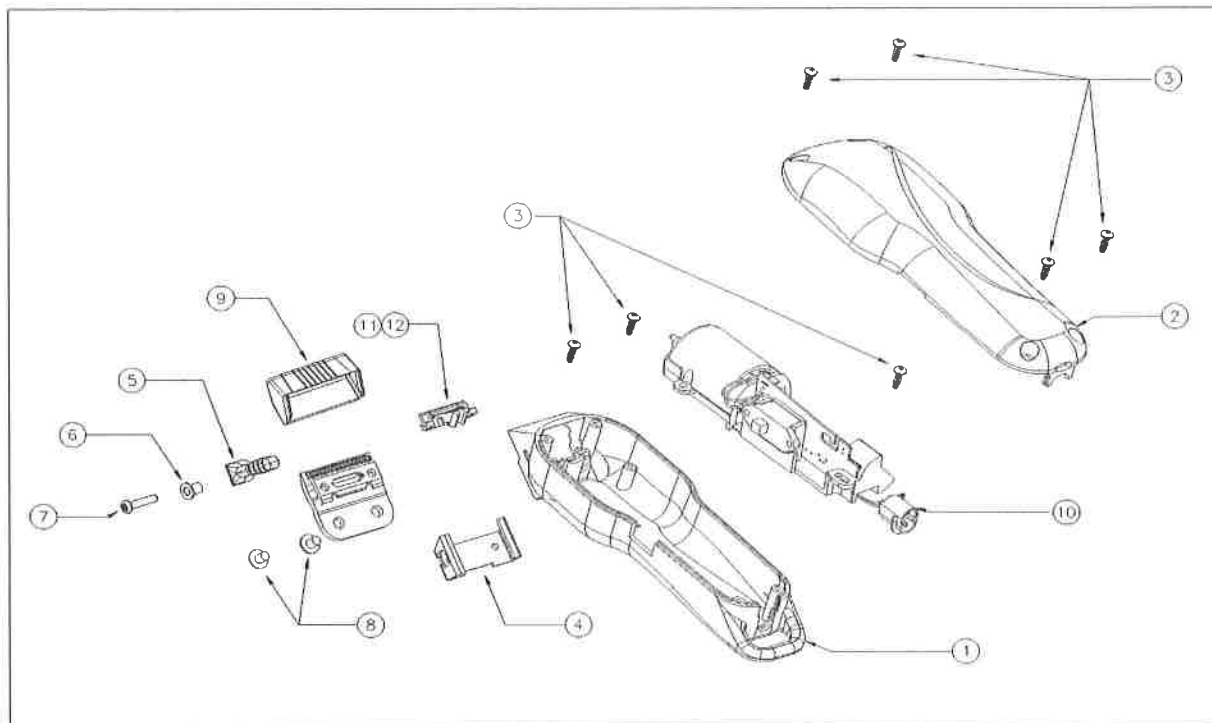


andis

MODEL LCL CLIPPER-INTL



| ITEM NO. | PART NO. | DESCRIPTION | QTY. REQ'D | EACH PRICE | | | |
|----------|----------|-----------------------------------|------------|------------|--|--|--|
| 1 | 73103 | Lower Housing | 1 | \$2.04 | | | |
| 2 | 73112 | Upper Housing-USPRO | 1 | \$2.58 | | | |
| 2a | 73113 | Upper Housing - Envy Li | 1 | \$2.58 | | | |
| 3 | 79049 | Screw | 7 | \$0.10 | | | |
| 4 | 66303 | Blade Bracket | 1 | \$0.30 | | | |
| 5 | 66122 | Lever Arm | 1 | \$0.15 | | | |
| 6 | 201001 | Lever Arm Bushing | 1 | \$0.22 | | | |
| 7 | 200967 | Lever Arm Screw | 1 | \$0.10 | | | |
| 8 | 66319 | Blade Screw | 2 | \$0.09 | | | |
| 9 | 75296 | Blade Guard | 1 | \$0.16 | | | |
| 10 | 73091 | Motor/Sled Assembly | 1 | \$16.80 | | | |
| 11 | 73061 | Torsion Spring | 1 | \$0.80 | | | |
| 12 | 73087 | Yoke | 1 | \$0.30 | | | |
| 13 | 73106 | Power Supply (not pictured) UK | 1 | \$6.58 | | | |
| 13 | 73111 | Power Supply (not pictured) Int'l | 1 | \$6.38 | | | |
| 14 | 200969 | Plug EU (not pictured) | 1 | \$1.00 | | | |
| 15 | 200970 | Plug UK (not pictured) | 1 | \$1.40 | | | |
| 16 | 200971 | Plug AU (not pictured) | 1 | \$1.00 | | | |
| 17 | 200972 | Plug BZ (not pictured) | 1 | \$1.40 | | | |
| 18 | 200973 | Plug US/CA (not pictured) | 1 | \$1.00 | | | |
| | | | | | | | |
| | | | | | | | |
| | | | | | | | |

IMPORTANT INFORMATION

When ordering repair parts, include part number, part name and model of trimmer. For best performance, trimmer blades should be CLEANED and OILED with Andis Clipper Oil before and after use. If repair is necessary, return to any Andis Authorized Repair Service Station, or to Andis Company, 1800 Renaissance Blvd., Sturtevant, Wisconsin, 53177 U.S.A.. Pack carefully, mail either Insured Parcel Post, or U.P.S. , attach a letter to outside of package explaining difficulty.